

PARTNERS IN PROGRESS



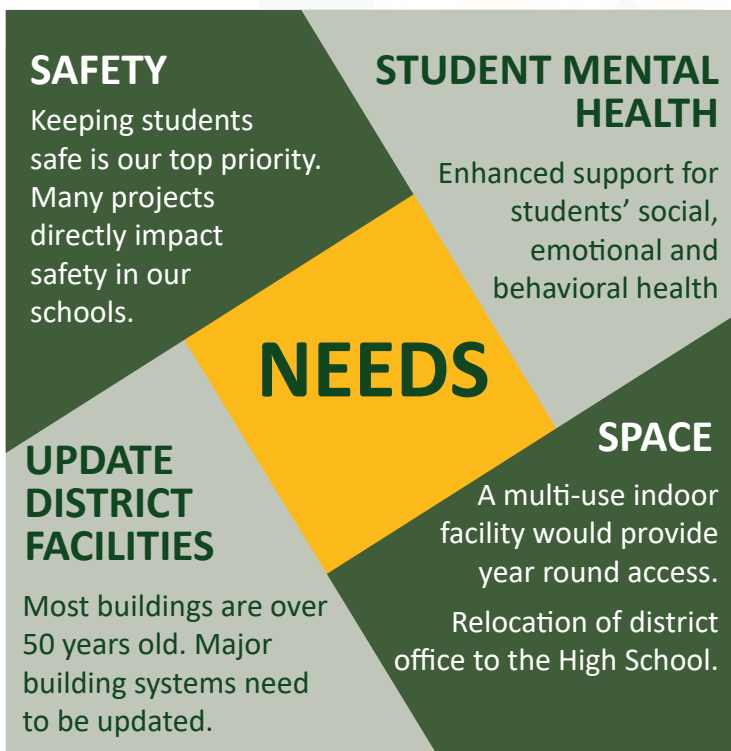
SPECIAL REFERENDUM EDITION

Message from Superintendent Weyers

The Ashwaubenon School District has earned a reputation for academic excellence and innovation throughout its rich history. Our staff continues to provide an educational environment that is innovative, responsive and focused on ALL students achieving at their full potential.

While there are many great things happening in the Ashwaubenon School District, we are constantly being reflective on how we can continue to provide an innovative, robust, and safe learning environment for our students. Improving student learning will always be our major focus, but keeping our students, staff, and visitors safe will always be our number one priority.

These are the reasons why we are proposing a referendum in the Spring of 2020. We have created a special edition to our Fall 2019 Partners in Progress in order to provide you with the information to help you understand the proposed upcoming referendum.



PROPOSED PROJECTS

- **Improving school safety**
 - Modify main entrances at Cormier and Pioneer
 - Add a traffic lane at Cormier
- **Improving student mental health services**
 - Increase Mental Health and Behavioral Support Staff to better service students
- **Adding air conditioning to Pioneer, Valley View and remaining portions of AHS**
- **Updating district facilities**
 - Repair the High School track
 - Abate asbestos
 - Repair Pioneer gym foundation
 - Replace gym floors at Pioneer, Parkview and older gym at AHS
 - Replace lighting in the gyms and Parkview Middle School Library
 - Replace doors and second floor windows at Parkview Middle School
- **Relocating the District Office into the High School**
- **Building a multi-use indoor facility**

2020 PROPOSED REFERENDUM OVERVIEW

ASHWAUBENON SCHOOL DISTRICT
1055 Griffiths Lane
Green Bay, WI 54304

NONPROFIT ORG
ECRWSS
U.S. POSTAGE
PAID
GREEN BAY, WI
PERMIT NO. 373

CAPITAL REFERENDUM OPTIONS

Base Plan

- » Improve school security and safety
- » Add air conditioning
- » Update district facilities
- » No tax increase

Base Plan Plus

- » Move District Office into the High School
- » Build a multi-use indoor facility
- » Annual property tax increase of \$60 for each \$100,000 of a home's value

OPERATIONAL REFERENDUM

- » Improve student mental health services
- » Operate new air conditioning systems
- » Annual property tax increase of \$55.50 for each \$100,000 of a home's value.

OVERALL IMPACT

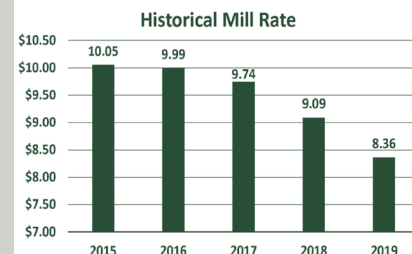
If all proposed Capital and Operational Referendum items are supported, the overall impact would be an annual property tax increase of \$115.50 for each \$100,000 of a home's value.

FINANCIAL BACKGROUND

We are proud of the fact that ASD taxes have consistently been low compared to other school districts in the county and in the state. In addition, over the last 5 years the Ashwaubenon School District mill rate has dropped over 15%.

*****ECRWSS*****

POSTAL CUSTOMER



YOUR INPUT IS NEEDED

Mark Your Calendars

- » **Community Information and Feedback Session**

Wednesday, September 18, 2019, 6:00 pm
Ashwaubenon Performing Arts Center

Learn more about the potential upcoming referendum projects.
Get your questions answered and provide your feedback.

- » **Check your mail in early October for an important referendum survey. The district needs your voice in this planning process.**

For More Information

- » Visit the website at <https://www.ashwaubenon.k12.wi.us/community/2020-referendum.cfm>
- » Frequently Asked Questions video series coming soon to the district FaceBook page and YouTube channel.
- » For specific questions, please contact Kurt Weyers or Keith Lucius:
1055 Griffiths Lane
Green Bay WI 54304
kweyers@ashwaubenonk12.org
klucius@ashwaubenonk12.org
920-492-2900



OUR STUDENTS • OUR SCHOOLS • OUR COMMUNITY • OUR FUTURE